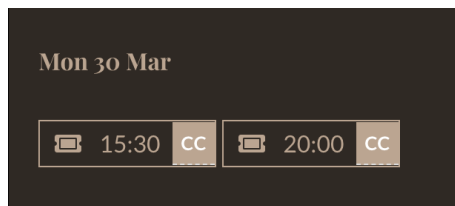




Accessibility Guide

We are proud to be a completely step-free venue. We have a fully accessible toilet and two wheelchair spaces in our screening room. We are a dog-friendly space and provide a warm welcome to all dogs; we have water and treats available.

We regularly schedule Closed Caption screenings, which are marked on the website with a cc icon as pictured below.



Our Doors

Venue doors:

This door is 40 inches wide and are pull to open.



Door open



Door closed

Door into the hallway to our screening room

This door is 39 inches wide and is a pull. This door is propped open during admission into screenings.



Door open



Door closed

Door into the theatre

This door is 37 inches wide and is a pull. This door remains open during admissions prior to screenings.



Cinema door open



Cinema door closed

Gender-neutral accessible toilet door

This door is 32.5 inches wide and is a sliding door with a long handle on the outside. This toilet has an automatic locking system; when the door is closed, it locks. There is a large exit button on the inside to unlock the door.



Door open



Door closed

Gender-neutral toilet door

This door is 32.5 inches wide and is a push door. There are three cubicles inside these toilets with 28 inch wide push doors.



Outside bathroom door open



Outside bathroom door closed



Cubicle door open



Cubicle door closed

Access within the cinema

Our two wheelchair accessible spaces in the cinema are A1 and A12 and are marked with the wheelchair icon on our website as pictured below:

SCREEN



These seats have removable chairs, which will be taken away when wheelchair tickets are bought, so they are functional as wheelchair spaces, if required. They can also remain if preferred.

Accessible seats before and after removal

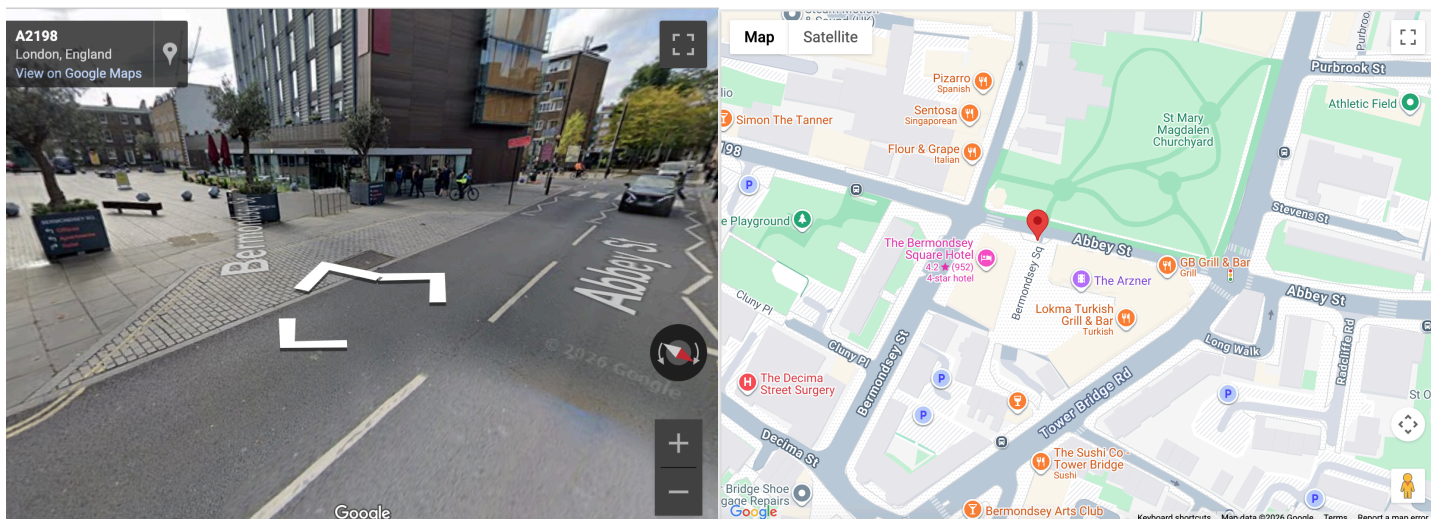
The width of these spaces are 27.5 inches wide.



Parking in the area

There is a parking bay with double yellow lines on Abbey Street, SE1 3FD in front of St Mary Magdalen Churchyard, which is the closest place to park for Blue Badge holders. Due to Blue Badge legislation, you are able to park on double yellows for up to three hours. Please check the length of the screening or event you are planning to attend to make sure it will not exceed three hours. Please note we are not liable for any parking fines and encourage visitors to research the area for other parking alternatives if needed. There are further step-free parking spaces behind Bermondsey Square Hotel, on Bermondsey Street.

Below is a picture of the parking bay with double yellows and a map of the area with the position of the parking bay signified by the red circular icon.



If you have any questions or accommodation requests ahead of your visit to The Arzner, please email foh@thearzner.com. Additionally, if you have any suggestions to improve the accessibility of our venue, please reach out. We are always looking for ways to better accommodate our customers.